



Tyrolean Lodge, Main Road, Yapton, BN18 OEA

£575,000 Freehold



4 Bedrooms



3 Bathrooms



2 Reception Rooms

Sw

Sims Williams

Key Features

- Extended Detached House
- Versatile Accommodation
- GF Bedroom With En Suite
- Stunning Kitchen/Diner/Family Room
- Sitting Room With Woodburner
- Utility, Study & Cloakroom
- 3 Further Double Bedrooms
- En Suite & Family Bathroom
- Ample Driveway Parking
- No Chain

EPC Rating

Current = C

Potential = C

Council Tax Band

Band = E

Tenure - Freehold



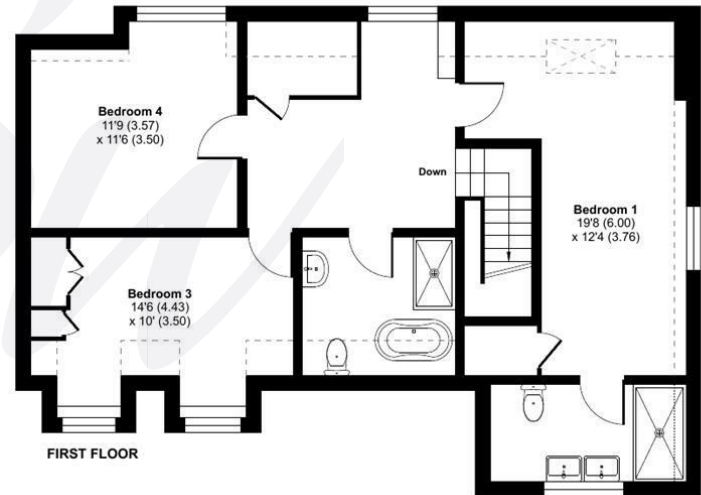
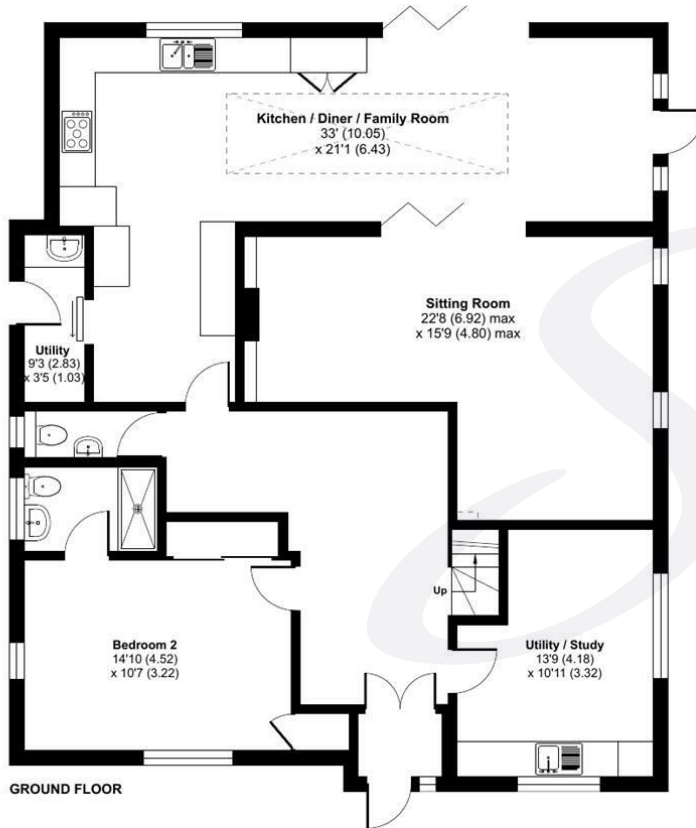
Approximate Area = 2076 sq ft / 192.8 sq m

Limited Use Area(s) = 96 sq ft / 8.9 sq m

Total = 2172 sq ft / 201.7 sq m

For identification only - Not to scale

Denotes restricted
head height



Floor plan produced in accordance with RICS Property Measurement 2nd Edition,
Incorporating International Property Measurement Standards (IPMS2 Residential). © nrichcom 2025.
Produced for Sims Williams. REF: 1310758





simswilliams.co.uk

CHICHESTER

8-9 Southgate

Sales 01243 787868

Lettings 01243 836055

chichester@simswilliams.co.uk

WALBERTON

5 Maple Parade

Sales 01243 551368

Lettings 01243 836055

walberton@simswilliams.co.uk

ARUNDEL

8a High Street

Sales 01903 885678

Lettings 01903 881133

arundel@simswilliams.co.uk

BOGNOR REGIS

46 High Street

Sales 01243 862626

Lettings 01243 836055

bognor-regis@simswilliams.co.uk

Viewing Strictly by arrangement via the vendor's agent Sims Williams 01243 551368. These particulars are believed to be correct but their accuracy is not guaranteed and they do not form part of any contract.